

Run Archery



Guidebook Organizers

V1.0 – June 2021

SUMMARY

Material conditions of organization

- The competition venue
- Racing circuits
- The archery field
- The targets
- Changing rooms and amenities
- human resources

Organization of the Registry

- Reception
- Results

Organization of the competition

- Timing system
- Judging
- Bibs
- Spotting
- Information boards
- Program of the competition

Communication

- Press kit
- Promotion of the competition

Appendixes

- I Configuration example: European Cup 2019
- II Examples of competition schedules
- III Edition of results

MATERIAL CONDITIONS OF ORGANIZATION

The competition venue

As for any sporting event, prior authorization is to be requested from the authority of the site. It must meet the regulatory safety requirements for the archery field and racing circuits and its dimensions must meet the sports regulations.

Attention: the use of the public road may be regulated. If your race circuit is concerned, contact the local authority who will tell you the obligations to be respected (means and services of safety, first aid, etc.)

Racing circuits

Track or paths passable without obstacles or holes. The regulation does not give any indication of the differences in height. Stay reasonable about physical difficulty. If there are areas with trees, ensure that the branches do not interfere with the passage of archers with the bow carried in the back.

The circuit must be marked, signposted for:

- Let competitors have no doubt about the directions to take
- Avoid intrusion from outsiders

The width must allow the archers to overtake each other.

The dimensions (minimum length and width) and their tolerances are indicated in the sports regulations.

The archery field

About 30m x 30m for 10 targets with rear protective wall

At the exit of the field, it takes enough space to install the penalty loop:

- perimeter 150 m (radius 24 m) long format
- perimeter 60 m (radius 10 m) sprint format

The targets

The sports regulations allow the use of 2 types of target:

- Paper target faces (made by yourself)
- Drop-down targets (few suppliers, information and plans are available to make them)

In the two cases their specifications are specified in the sports regulations.

Even if the organizers want to please the archers by proposing drop-down targets, this represents a certain budget, especially for a first organization. We advise to start with paper target faces before considering a heavy investment (financial for the purchase, and in time if you make your targets yourself).

Changing rooms

Unusual in the other disciplines of Archery, the use of changing rooms can be appreciated to be able to change and possibly take a shower at the end of the day after the last races. If you can offer this service, it will be appreciated. We advise to indicate in the invitation package whether this service is available or not.

Human resources

The organization of a Run-Archery requires to have the sufficient number of volunteers on the same day:

- Registry/Results: 2
- Timing/departures: 3
- Spotters: ideally 1 per target (10 if 10 targets in the most common configuration) or at least 1 spotter for 2 targets
- Field/race officials: 2 minimum
- Animation – announcements: 1

- Depart Management: 1
- Refreshment bar: 2

You must be guaranteed to have at least 22 people involved in the organization so that it can take place in good conditions.

The presence of a doctor, or people with training in first aid is highly recommended.

ORGANIZATION OF THE REGISTRY

Reception

The transplant is organized as for the other competitions with two exceptions:

- People who are not licensed to the FFTA can take out a specific Run-Archery Pass for the competition date.
- No application allows a recovery of the license data of the FFTA database (unlike Result'Arc)

Results

No applications or software are currently created.

The presentation of results is important, it is part of promotion to make it clear and readable for people who would like to give interest in Run-Archery, and for a possible audience. (cf. appendix)

ORGANIZATION OF THE COMPETITION

Timing system

Several solutions are possible:

- **Manual timing:**
With a chronometer or Chronometer applications on smartphones.
It takes 3 to 4 people to manage the arrival: 1 person raises the times, 1 raises the bib numbers, 1 that announces to those who raise and an emergency stopwatch.
- **Semi-electronic timing:**
There are timing software at a very reasonable price that allows you to manage: list of registrants, allocation of bib, race management but without electronic chips. 2 to 3 people are needed to manage the arrival.
- **Electronic timing:**
Provision of services to a professional who will perform the timing using electronic chips.

Judging

Run-Archery requires 3 judges to run well. Their role and functions are part of the sports regulations.

Bibs

The bibs are to be expected in 2 identical games (2 bibs per participant). Think about the stock of feed pins.

Spotting

The role of spotters is essential because they judge hit or missed targets and therefore penalty loops to be achieved. In this sense they are the auxiliaries of the arbitrators. It is therefore necessary to put in this position responsible people who are aware of their responsibility. They must also be trained in their task before the competition. This is particularly the role of judges.

You can anticipate this training by relying on the "Guidebook of spotters and race officials."
Spotters and race officials at the penalty loop must fill out reports.

Information boards

It is necessary to have a information area in order to indicate the program of the day, the results of the races, the lists of qualified in the case of competition with several rounds. All this information must be constantly and immediately updated.

Program of the competition

You will find in the appendix examples of programs giving you an overview of the time intervals between departures. You have the choice within the limits of the regulatory formats.

COMMUNICATION

Press kit

World Archery Europe proposes you a document presenting the discipline that you can translate and use to supplement the information you transmit to the press, communities or to support your search for partners.

Promotion of the competition

To catch new participants, in addition to the members who come to discover the discipline, the best experiences of the organizers who have taken the plunge is to advertise during running races that take place before the Run-Archery competition. Some runners are interested in discovering combined disciplines.

The sports regulations of the Run-Archery have been drafted according to a structure allowing to quickly understand the fundamentals of the discipline. Thus, Part "34.1" which fits in a few pages may be sufficient for the beginner (or the outside observer).

Some organizers include in the schedule some time to initiate these people who are not archers before the start of the competition.

In this case, the initiation zone must be installed in a separate place, in full appliance of the usual safety regulations.

Source: French Archery Federation documents

ANNEXE I Example of organization: EUROPEAN CUP 2019

Location: NOVE MESTO NAD METUJI (CZE)

Schedule of the competition:

Saturday

SPRINT : Qualifications + Demi-finales + Finales

SPRINT Mixed RELAY

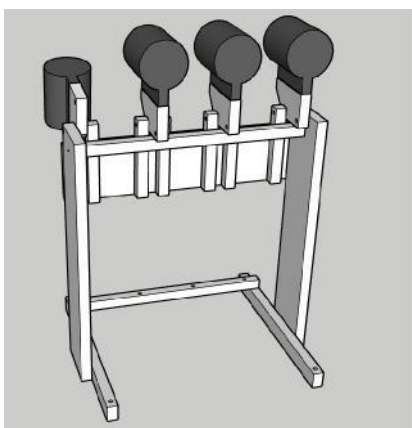
Sunday

INDIVIDUAL 4x1000 m

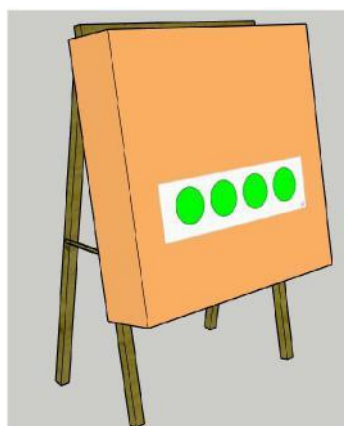
SPRINT RELAY

Target :

Drop-down targets for the competition



Paper Target faces for the practice field

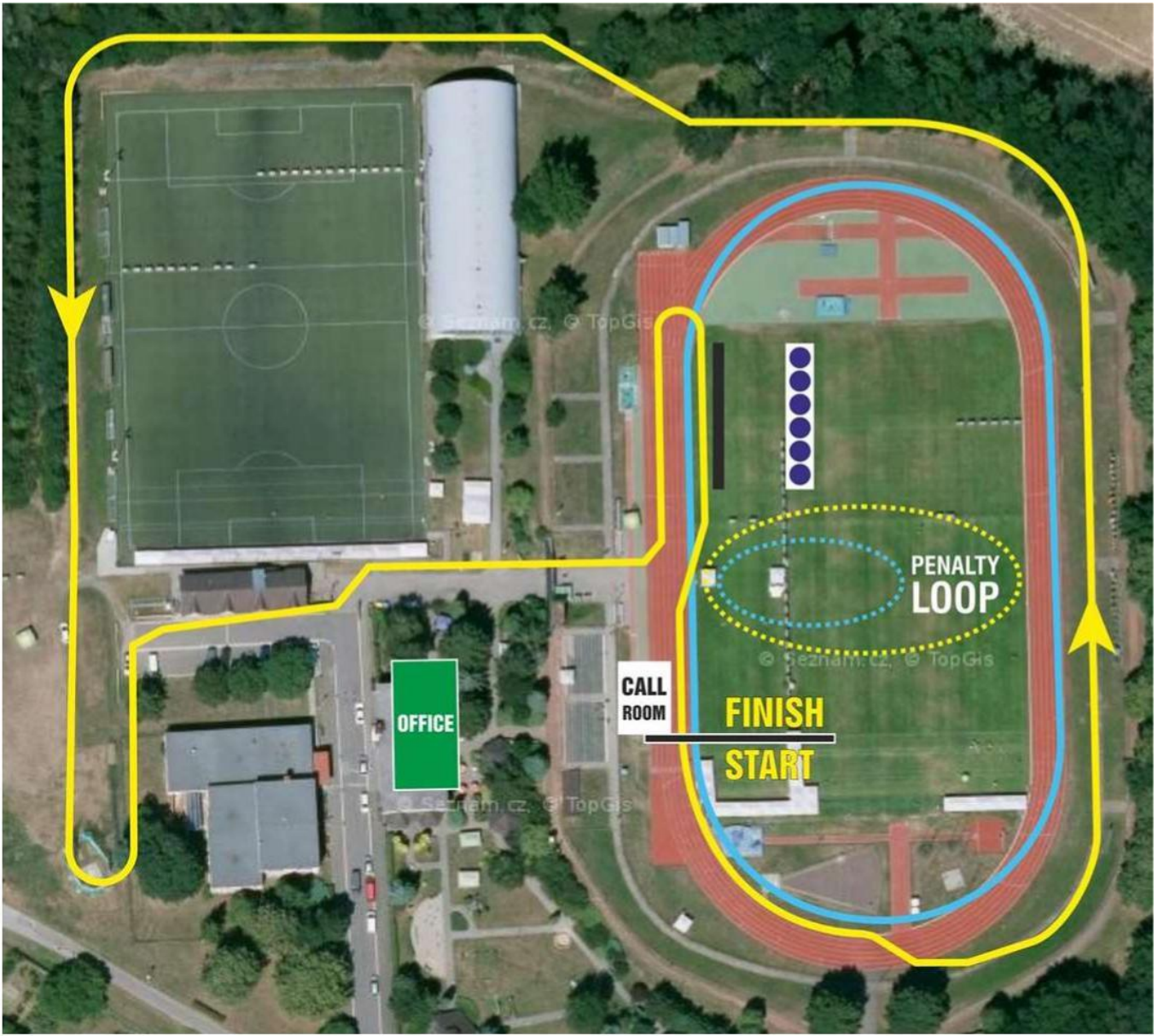


Timing system :

Electronical one with chips and :

- One detection carpet at depart/arrival line
- One detection carpet at penalty loop

VENUE OF THE COMPETITION



LOCATION OF OFFICIALS ON THE FIELD



(A)



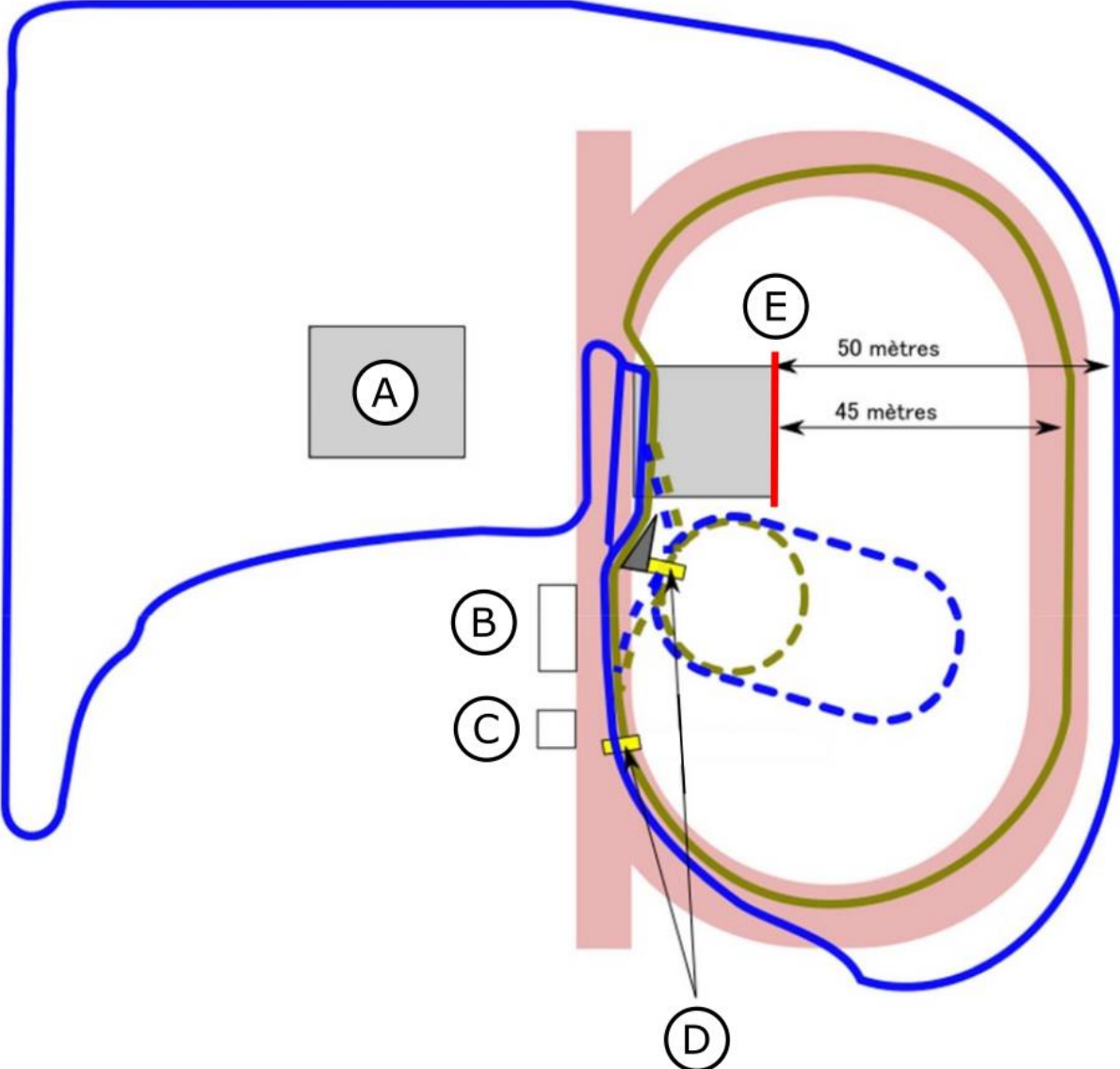
(B)



(C)

- A RACE OFFICIAL**
In charge of the coordination of the places on the shooting line (allocation of targets, ...)
- B RACE OFFICIALS**
In charge of the control and report of penalty loops done by archers
- C SPOTTERS**
Announcement of hit or missed targets.
Reset-up of drop-down targets after shootings

SPECIFIC AREAS



- A Permanent practice field
- B Call room
- C Results and timing crew
- D Detection carpets
- E Safety wall

ANNEXE II Examples of competition's schedule

½ day with Sprint and Relay	
Accreditation	09H00 – 10h00
Warm-up	09H30 - 10h30
Sprint Men	10h45 – 11h00
Sprint Women	11h00 – 11h20
Relay	12h00 – 12h15
Podiums	12h40

½ day with individual 4x1000m	
Accreditation	09H00 – 10h00
Warm-up	09H30 – 10h30
Individual 4x1000m	10h45 – 11h45
Podiums	12h00

2 separate races Individual & Sprint	
Accreditation	09H00 – 10h00
Warm-up	09H30 – 10h30
Individual 4x1000m	10h45 – 11h45
Podiums	12h15
Accreditation	13h30 – 14h30
Warm-up	14h00 – 15h00
Sprint Women	15h15 – 15h35
Sprint Men	15h35 – 15h50
Relay	16h30 – 16h45
Podiums	17h15
<p><i>The indicated duration is based on one group of archers starting at the same race. If you must split in several groups, you will have to adjust the schedule.</i></p>	

Individual with Finals + Relay	
Accreditation	08H00 – 09h00
Warm-up	08H30 – 09h30
Individual 4x1000m	10h00 – 12h30
Discovery race	13h00 – 13h15
Semi-finals	13h30 – 14h00
Discovery race	14h15 – 14h30
Finals	14h45 – 16h00
Relay	16h30 – 16h45
Podiums	17h15
<p><i>It is possible to organize a competition in 2 half-days:</i> - Saturday afternoon : qualifications - Sunday morning : ½ finales, finales, relais</p> <p><i>That is an advantage for archers to have time to recover between races, and for the organizer to finish the competition at a reasonable time.</i></p> <p><i>In case of this schedule in one day, keep in mind to let some time to recover between the races.</i></p>	

If an initiation session is proposed to beginners (runners who are not archers), you should indicate it on the invitation package.

Better is to consider 1 hour for archery lessons, a 30 minutes for time to prepare for the race before the start of the competition.

ANNEXE III PROPOSAL OF PRESENTATION FOR RESULTS

Results must be clear and readable for everyone.

Here is the example of edition proposed by the French Archery Federation Run-Archery Committee.

Pl.	NOM ET PRENOM	DOSS	Licence	Categ	Tps Mesuré	Fl tirées			B. dues			B. courues			Pénalité Flèches		Pénalité Boucles		Ajustement de temps*		RESULTAT Tps Calculé
						T1	T2	T3	T1	T2	T3	T1	T2	T3	Nb	Temps Addit.	Nb	Temps Addit.	déduction	ajout	
Course N° 1 - LONG 1 - LONG 4x 1000m																					
JUNIOR HOMME																					
1	VACQUAND THEO	0003		JH	30:15,760	4	4	4	2	3	4	2	3	4	0	00:00,000	0	00:00,000	00:00,000	00:00,000	30:15,760
SENIOR 1 FEMME																					
1	BRUN AURELIA	0007		S1F	34:20,420	4	4	4	3	2	3	3	2	3	0	00:00,000	0	00:00,000	00:00,000	00:00,000	34:20,420
2	BAERT MARIE	0002		S1F	42:26,840	4	4	4	3	4	1	3	4	2	0	00:00,000	0	00:00,000	00:00,000	00:00,000	42:26,840
SENIOR 1 HOMME																					
1	LARRIBAUD CEDRIC	0006		S1H	23:04,070	4	4	4	2	3	3	2	3	3	0	00:00,000	0	00:00,000	00:00,000	00:00,000	23:04,070
2	BRASSEUR BENJAMIN	0010		S1H	25:06,140	4	4	4	4	3	2	4	3	2	0	00:00,000	0	00:00,000	00:00,000	00:00,000	25:06,140
3	SOLA JULIEN	0104		S1H	25:47,230	4	4	4	4	3	3	4	3	3	0	00:00,000	0	00:00,000	00:00,000	00:00,000	25:47,230
4	MORIN JEAN-PHILIPPE	0109		S1H	25:51,910	4	4	4	4	2	3	4	3	2	0	00:00,000	1	02:00,000	00:00,000	00:00,000	27:51,910
SENIOR 2 FEMME																					
1	VICIDOMINI VALERIE	0014		S2F	34:42,740	4	4	4	3	4	2	3	4	2	0	00:00,000	0	00:00,000	00:00,000	00:00,000	34:42,740
2	CALBO LAURENCE	0008		S2F	35:42,740	4	4	4	3	3	4	3	3	4	0	00:00,000	0	00:00,000	00:00,000	00:00,000	35:42,740
SENIOR 2 HOMME																					
1	VALENTIN LAURENT	0013		S2H	32:58,370	4	4	4	4	3	4	4	4	3	0	00:00,000	1	02:00,000	00:00,000	00:00,000	34:58,370
2	BRASSEUR ROMAIN	0012		S2H	40:29,070	4	4	4	4	3	4	4	3	4	0	00:00,000	0	00:00,000	00:00,000	00:00,000	40:29,070
SENIOR 3 FEMME																					
1	SOLA CHANTALE	0005		S3F	44:50,790	4	4	4	4	4	4	4	4	4	0	00:00,000	0	00:00,000	00:00,000	00:00,000	44:50,790

- A Ranking
- B Name
- C Bib number
- D ID number (license number)
- E Age category
- F Measured time at the end of the race
- G Number of shot arrows (shoot 1, shoot 2, shoot 3)
- H Number of penalty loops announced by the spotter
- I Number of penalty loops made by the archer
- J Penalties on shot arrows (number & time)
- K Penalties on penalty loops (number & time)
- L Time adjustment decided by judges (time to deduct)
- M Time adjustment decided by judges (time to add)
- N Final time to consider for ranking