



**2025 EUROPEAN ARCHERY  
3D CHAMPIONSHIPS**  
**29.09.-05.10.2025.**  
**Divčibare, SERBIA**  
**V. 1.0**



# **EUROPEAN ARCHERY 3D CHAMPIONSHIPS**

**DIVČIBARE, SERBIA**  
**2025.**

**EUROPEAN ARCHERY 3D  
CHAMPIONSHIPS 2025**  
*INVITATION PACKAGE*

v.1.0



**2025 EUROPEAN ARCHERY 3D CHAMPIONSHIPS**  
**29.09.-05.10.2025.**  
**Divcibare, SERBIA**  
**Version 1.0**



*To all World Archery Europe Member Associations*

Dear President, Secretary General,

On behalf of the Local Organizing Committee, I would like to invite your Country to the European 3D Championships 2025, which will be held from 29<sup>th</sup> September to 5<sup>th</sup> October 2025. on Divcibare, Serbia.

We are excited to host the best European 3D archers for the first time in Serbia.

Please find enclosed all the necessary information for registration, organisation, and participation in this event. To register for participation, please complete the necessary details in WAREOS within the deadlines listed below.

Summary of deadlines:

Registration Opening date - WAREOS	20 May 2025
<b>Preliminary Entries Deadline</b>	<b>27 June 2025</b>
Preliminary Hotel Reservation	27 June 2025
Hotel Reservation & 50% Payment	27 June 2025
Visa Support Deadline	10 July 2025
<b>Final Entries Deadline</b>	<b>9 September 2025</b>
Entry Fee Payment Deadline	9 September 2025
Final Hotel Reservation & Full Payment	9 September 2025
Transportation & Full Payment	9 September 2025

Sincerely yours,

*Mr. Slobodan Pavlovic*  
LOC President



## PRELIMINARY PROGRAMME

<i>Day</i>	<i>Date</i>	<i>Description</i>
Day -2	Saturday 27 September	Arrival of Delegations Unofficial Practice field and local transportation available
Day -1	Sunday 28 September	Arrival of Delegations Unofficial Practice field and local transportation available Team Registration
Day 0	Monday 29 September	Official Practice and equipment inspection Team Managers' Meeting Opening Ceremony
Day 1	Tuesday 30 September	1 <sup>st</sup> Qualification Round – 24 targets unmarked
Day 2	Wednesday 01 October	2 <sup>nd</sup> Qualification Round – 24 targets unmarked
Day 3	Thursday 02 October	Team & Mixed Team Eliminations and Semifinals
Day 4	Friday 03 October	Individual Elimination Round and Semifinals
Day 5	Saturday 04 October	Team & Mixed Team Finals
Day 6	Sunday 05 October	Individual Finals Awards Ceremony/Closing Ceremony Party
Day 7	Monday 06 October	Delegations departure

### NOTE

This preliminary programme is subject to change according to participation and broadcasting requirements. All changes will be published and distributed on time.





**2025 EUROPEAN ARCHERY 3D CHAMPIONSHIPS**  
**29.09.-05.10.2025.**  
**Divcibare, SERBIA**  
**Version 1.0**



## **PRELIMINARY & FINAL REGISTRATION**

All entries, accommodation reservations, transport needs, flight arrival/departure information and visa invitation letter requests are to be completed using the World Archery Online Registration System WAREOS. These systems now handle the entire registration process for this event. No entry forms, hotel reservations or transportation forms will be accepted outside of WAREOS.

Member associations can login to WAREOS at <http://extranet.worldarchery.sport> with the username and password assigned by World Archery. After entering WAREOS, selecting the event from the list will allow a member association to register their athletes. Select/press the “Entries” button to see the list of categories in the event. Select/press the “category” to enter the athlete and official numbers/details participating for that event. A WAREOS User Manual can be downloaded in PDF format (English) upon login.

Contact [wareos@archery.sport](mailto:wareos@archery.sport) with any questions regarding technical problems on WAREOS. For any question regarding the organization of the event (transport, accommodation, meals, invoices, visa etc.) please directly contact the LOC.

A maximum number of 3 (three) athletes per country (host country included) are allowed to be registered into each category of the event.

<b>Start date for online registration using WAREOS:</b>	<b>20 May 2025</b>
<b>Preliminary Entries Deadline using WAREOS</b>	<b>27 June 2025</b>
<b>End of Final registration using WAREOS:</b>	<b>9 September 2025</b>

Please respect the stated deadlines.

Member Associations should only use WAREOS to make any changes/amendments to their entries and will be able to do so at any time. Any changes made in WAREOS an email will instantly be automatically sent to the Local Organizing Committee and Member Association with the updated information.



However, any changes that are made after the deadlines specified or if entries differ by more than 4 athletes from the preliminary entries, the following penalty fees will automatically be applied:

Penalty fees to be paid to Organizing Committee:	Cost (EURO):
Entries made after the preliminary and/or final entry deadline date.	€ 50 per entry
If final entries differ from the preliminary entries by more than 4 athletes/officials.	€ 150 per entry
Failure to have made preliminary entries before the deadline date but then have submitted final entries athletes/officials/teams	€ 150 per entry

Any change to the final country entry list, such as (but not limited to): € 30 each

- Athlete or official name change
- Date of birth change
- Official position change

### **NOTE**

Member Associations that have penalty fees outstanding from earlier events will need to pay these penalty fees and get good standing before being eligible to enter and compete.

Also, World Archery fee must have been paid before the participation.

## ACCOMMODATION & GENERAL INFORMATION

### Important Note

**Non-official accommodation is not allowed. Any team or individual accommodated in non-official hotel will not be accredited and participation in the event will be refused.**

The official hotels are divided into two categories: 4\* & 2\*. Hotels are especially selected by the organisation for the event. Hotel allocations will be made on a 'first-come, first-served' basis.

Reservations should be made before  
Final Hotel Reservation & Transportation Forms

27 June 2025  
9 September 2025

To confirm your hotel reservations, 50% deposit of the total amount is to be paid by a bank transfer to the Organizing Committee before 27 June 2025. Reservations received after this date will be considered only according to availability.

The hotel rates are **per room/per night half-board** \* (lunches will be served at the venue), including free internet and free parking near the hotel. Additional purchases in the hotel bar, café and mini bar are at your own expense.

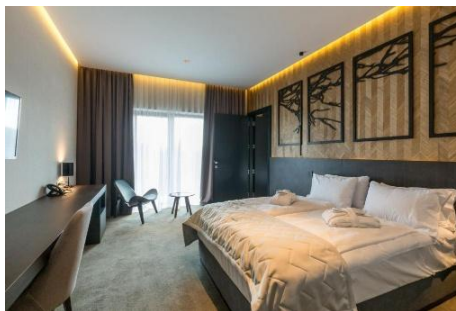
*\*All prices include city tax and VAT.*

## HOTELS

### **HOTEL CRNI VRH \*\*\*\*\***

Ljuti Krs 1, Divcibare (44.11438-19.99696)

- Single room price: € 200 per room
  - Number of rooms: 30
- Double/Twin room price: € 320 per room
  - Number of rooms: 70
- Half board – lunch will be served at the venue
- Check-in: 27.09.2025. 14:00, 30 single rooms and 30 double rooms  
28.09.2025. 14:00, 40 double rooms
- Check-out: 06.10.2025.





### **HOTEL PEPA \*\***

Divcibare bb, Divcibare (44.1017-19.991220)

- Single room price: € 160 per room
  - Number of rooms: 10
- Double/Twin room price: € 280 per room
  - Number of rooms: 20
- Three-bed room price: € 330 per room
  - Number of rooms: 10
- Half board – lunch will be served at the venue every day
- Check-in: 27.09.2025. 14:00
- Check-out: 06.10.2025.



## ENTRY FREE

Individual:	€ 250	per athlete
Officials:	€ 125	per person
Teams:	€ 150	per team
Mixed Team:	no entry fee	

Entry fees include daily local transport to and from the practice field to/from official hotels during the qualification, elimination, and finals venues (timetable to be confirmed on site).

## PAYMENT CONDITIONS

**All fees should be paid in full before arrival.**

Payment of accommodation and local transportation: a minimum deposit of 50% of the total amount owed should be made when booking by 27 June 2025.

The final outstanding balance shall be transferred **15 days before** arrival. Accommodation cannot be guaranteed after this deadline. A balance invoice will be provided via WAREOS.

**The Entry fee should be paid by 9 September 2025.**

### ENTRY FEE:

Beneficiary: Serbian Archery Association  
Address: Makedonska 28/2 Beograd, SERBIA  
BANK: AIKBANK AD BEOGRAD  
Bank address: Bulevar Arsenija Carnojevisa 59A, 11070 Novi Beograd, SERBIA  
SWIFT: AIKBR22  
IBAN: RS35105051912000000130

### ACCOMMODATION:

Beneficiary: PanaComp – Zemlja cuda d.o.o.,  
Address: Bulevar Cara Lazara 96, Novi Sad, SERBIA  
BANK: BANCA INTESA AD, Beograd, SERBIA  
Bank address: Milentija Popovica 7b, 11000 Beograd, SERBIA  
SWIFT: DBDBRSBG  
IBAN: RS35160005390001200036



### NOTE

All payments shall be made in € only by BANK TRANSFER.

**The sender is responsible for the Bank transfer fees.**

Credit cards and Travel checks will not be accepted.

## CANCELLATIONS & CHANGES

All cancellations and changes must be made through WAREOS:

- Cancellations received before 9 September 2025 - a full refund of the deposit payment will be made.
- Cancellations received after 9 September 2025 - no refund will be given.
- Refunds will be processed after the event.
- Name changes to team officials or athletes (same category and division) will be accepted up to 72 hours before the event without any additional charge.
- Should flight arrival details change at the last minute, please contact the Organizing Committee using the details indicated in the IP and Team Managers' Booklet.
- If a participant's arrival is later than the original scheduled arrival date, the room charges will start from the dates of the original booking made by the Member Association.

## ADDITIONAL INFORMATION

### LUNCH

Lunch during the entire event will be served at the Competition venue in "Archery village".

All other costs incurred in the bar at the archery venue or in the hotel, like snacks, drinks, and light meals, are not included in the registration fee and must be paid according to consumption by your own.

Please inform us in advance if there are any food needs and/or intolerances.

Types of lunch:

- Complete meal (2 courses + fruit + water)

### ACCREDITATION

Accreditation will take place at the hotel Crni Vrh.

The accreditation office will be open on Saturday, 27 September and Sunday, 28 September, from 09:00 to 18:00.

It is not possible to access the practice field without the Accreditation.

### TEAM MANAGER MEETING

More details will be provided during the Team Manager Meeting.

The Team Manager Meeting will be held in the hotel Crni Vrh on Monday, September 29<sup>th</sup>, at 12:00.



### **VENUE**

For the European archery 3D Championships will be used the area around Ski Resort Divcibare. Entry to the competition areas outside the official program is not allowed. The area will be available from 27 September 2025 on the practice field.

The central area, “Archery village” will be next to the practice field. This area is designated for the equipment tents, food court and fun zone. “Archery village” will be the starting point for all 3 courses and the finals field.

### **TRANSPORT**

LOC will provide transportation services with dedicated vehicles for Delegations and International-National Technical Officials for all days of training and competition. This service will start at the official opening of the training field until the closure and will operate for opening/closing ceremonies and arrivals/departures too. The LOC will provide transportation service from September 27 until October 06, including arrival and departure transfer services from/to the International airport Belgrade Nikola Tesla (BEG).

The Organising Committee will welcome the teams at airport, according to the transport costs as follows:

Belgrade Nikola Tesla - Divcibare:	115 Km	40,00 € per person
Divcibare – Belgrade Nikola Tesla:	115 Km	40,00 € per person

Price is **per person one way, including VAT.**

### **The final deadline for transport payments is 9 September 2025.**

Between airport and hotels, the organizer will use buses, small buses, vans and cars, which will depend on the number of people planned for transportation.

Transportation from airports will begin two days before the day of official practice and will end one day after the closing day.

Shuttle buses will transport athletes and officials to venues and back on fixed routes all day long. Everyday athletes will have a bus, the first in the morning, dedicated to bringing them to the competition venue and/or to the training venue, departing from each official Hotel with no stops over the official routing.

### **ADDITIONAL INFORMATION:**

#### **INTERNET**

Free WIFI will be available in the official hotels and at the “Archery village”.

#### **WATER**

Water will be available at the venue free of charge. Due to the sustainability and preservation of the beautiful natural environment of Divcibare, all contestants will be provided with stainless-steel water bottles for a refilling from water dispensers.





**2025 EUROPEAN ARCHERY 3D CHAMPIONSHIPS**  
**29.09.-05.10.2025.**  
**Divcibare, SERBIA**  
**Version 1.0**



***MEDIA/PRESS***

Media representatives can apply for registration by emailing: [sekretarijat@sssrb.org.rs](mailto:sekretarijat@sssrb.org.rs)





**2025 EUROPEAN ARCHERY 3D CHAMPIONSHIPS**  
**29.09.-05.10.2025.**  
**Divcibare, SERBIA**  
**Version 1.0**



### ***WEATHER***

Divcibare is located at 980 m above sea level.

The period of the year during championships is the beginning of autumn in Divcibare, so rain and wind could be possible.

The average temperature is **12-17°C** (high **17-23°C** and a low **7-11°C**).

### ***DRESS REGULATION***

According to WA & WAE rules.

### ***CLOSING PARTY***

On the last day, Sunday October 5th, dinner will be served at the hotels until 20:00.

After dinner, music and dancing will take place from 20:30 to 24:00 in “Archery village”.

Banquet cost is € 15,00 per person.

Transfer from hotels to the “Archery village” and back will be provided.

**Party Tickets should be all paid by 9 September 2025, by bank transfer.**

### ***VISA SUPPORT***

All participants who need an entry Visa to Serbia will be required to complete the Visa Support Form in WAREOS no later than 10 July 2025.

It is the applicants' responsibility to supply the necessary information, ensuring all details are up to date, correct and submitted by the deadlines specified.

In addition, all participants who require a visa are kindly requested to supply a copy of their latest/valid passport. Copies of each application can be uploaded to WAREOS. All passport copies and personal details entered/uploaded to WAREOS will be held securely and in the strictest of confidence and will not be shared with other parties.

Please note that the Organising Committee can provide an invitation for the period of the European Archery 3d Championships.



## Local organizing committee contacts

### LOC President

**Mr. Slobodan Pavlovic**

Email:

[slobodan.pavlovic@sssrb.org.rs](mailto:slobodan.pavlovic@sssrb.org.rs)

Mobile:

+381 63 596 364

Language:

English

### Competition Manager

**Mr. Teodor Cerevicki**

Email:

[compmanager@sssrb.org.rs](mailto:compmanager@sssrb.org.rs)

Mobile:

+381 63 266 711

Language:

English

### Transport & Accommodation

**Mrs. Suzana Dzakic Alempic**

Email:

[suzana.dzakic@panacomp.net](mailto:suzana.dzakic@panacomp.net)

Mobile:

+381 62 805 3860

Language:

English

### Secretary and Finance

**Mr. Dragan Tomasevic**

Email:

[sekretarijat@sssrb.org.rs](mailto:sekretarijat@sssrb.org.rs)

Language:

English

## LOCATION

### ***DIVCIBARE***

Divcibare is a famous mountain tourist place - a plateau, located in the central part of the Maljen mountain. Maljen is characterised by a characteristic relief, which determines favourable climatic characteristics and a diverse and specific flora and fauna on this mountain. There are well-preserved forests on Maljen, and this mountain is the northernmost habitat of pine forests in Serbia. Divcibare lies at an altitude of 980 m. They are surrounded by hills that protect them from the winds, soften the climate, and at the same time represent places from which there is an extraordinary view of the immediate surroundings, but also of some more distant parts of Serbia.

A good geographical position conditions the arrival of air masses from the Adriatic Sea and the collision with air masses from the Carpathians and the Pannonian Plain, which explains the presence of iodine in the air. Springs and summers are short, winters are cold and long with heavy snowfall, and autumns are long and mild.

